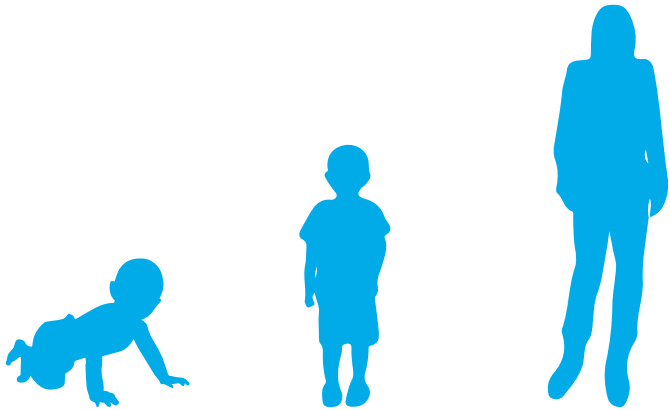




20,000

abused and neglected children served annually in Dallas County

Every age. Every background. Every ZIP code in Dallas County.



43%

0 – 3 Years Old

33%

4 – 9 Years Old

24%

10 – 19 Years Old

We help children who have been removed from situations of:

- ➔ Physical Abuse
- ➔ Sexual Abuse
- ➔ Emotional Abuse
- ➔ Abandonment
- ➔ Neglectful Supervision
- ➔ Physical Neglect
- ➔ Medical Neglect
- ➔ Refusal to Accept Parental Responsibility

54% of families served by the Rainbow Room have an annual income of less than \$14,000

WE START THEM ON A PATH TO HEALING

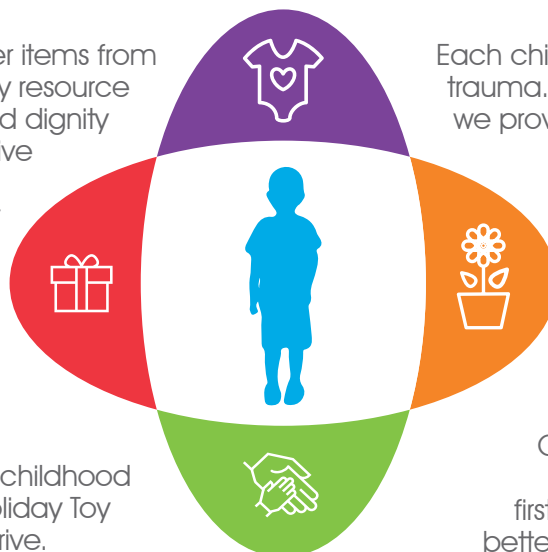
Our mission is to provide what abused children urgently need today to thrive tomorrow.

BASIC NEEDS

A car seat. Clothes. These and other items from the Rainbow Room, our emergency resource center, restore a sense of safety and dignity to children who often enter protective care with only the clothes on their backs. Our Night Response Support Program welcomes children removed in the middle of the night to a facility dedicated to meeting their every need.

CHILDHOOD EXPERIENCES

We contribute to positive, affirming childhood experiences through our annual Holiday Toy Drive, as well as our Easter Basket Drive.



INDIVIDUALIZED NEEDS

Each child has unique needs to overcome trauma. Through our Kids in Crisis Program, we provide for highly personalized, critical needs like therapy, medical expenses and housing.

CASEWORKER ENGAGEMENT

Providing Child Protective Services CPI/CPS/Empower caseworkers with support, resources and a positive, first-of-its-kind workspace translates to better results for the children they serve.

OUR IMPACT IN 2025



3,482

children were served
by Kids in Crisis



15,562

children were served
by the Rainbow Room



181,497

total annual
items distributed



\$1,547,515

worth of
goods distributed



2,555

children served by
the Back-to-School Drive



5,034

children served
by the Toy Drive



2,861

children served by
the Easter Basket Drive



4,042

babies and toddlers
under 3 served

Better Caseworker Retention = Better Outcomes for Children

When a CPS caseworker leaves, it has a detrimental effect on the children who were in his or her protective care. There is a direct correlation between the number of caseworkers a child has and the odds that he or she will find a forever home.

74% of children who have just one caseworker will find a forever home in that year.

But, with two caseworkers, **the odds drop to 17%.**

With three caseworkers, **the odds fall to just 5%.**

YOU CAN BE THE DIFFERENCE FOR A CHILD

At Community Partners of Dallas, you can be part of restoring safety and creating hope.

Donate

Give a child the support they need to start the journey to healing

Volunteer

Flexible opportunities for individuals of all ages, families, corporations and groups

Collect

Participate in our Back-to-School, Coat, Toy or Easter Basket drives

Join

Get involved in our women's auxiliary, our teen board, our young professionals group, or our donor affinity group for those over 50

Attend

Sponsor or attend our fundraising events: the Chick Lit Luncheon, Thrive Together (wellness challenge), Pumpkin Patch at NorthPark Center or Change is Good (family event)

communitypartnersdallas.org



7950 Elmbrook Drive • Dallas, Texas 75247 • (214) 624-7557